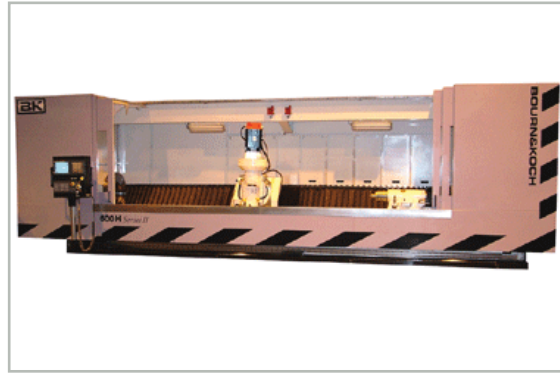




# 600 HXL

## Horizontal Hobbing Machine

HORIZONTAL HOBBING



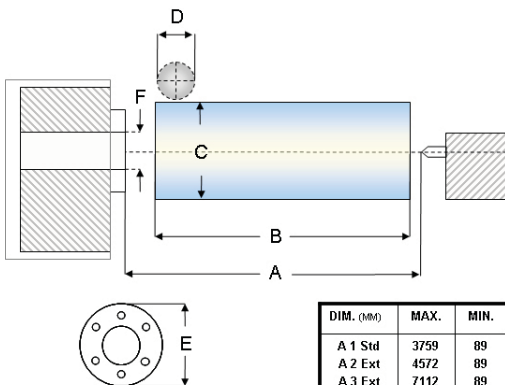
### STANDARD MACHINE SPECIFICATIONS

The Bourn & Koch 600HXL is a 6 axis CNC Horizontal Hobbing/Milling Machine for hobbing spur and helical gears, splines and threads on cylindrical blanks or shafts. It is practical to hob and/or mill more than one component sequentially if multiple components exist on a shaft.

### Technical Data - Capacities & Limits

Nominal Workpiece Diameter	600 mm
Maximum Module	12 Mod
Maximum Axial Cutting Length	3759 mm
Maximum Hob Diameter	200 mm
Maximum Hob Length	250 mm
Maximum Hob Swivel	+/- 45°
Maximum Hob Shift	2155 mm
Hob Speed Range (RPM)	30-250
Workspindle Maximum Speed (RPM)	15
Hob Drive Power	15 kw
Width (Approximate)	3276 mm
Height (Approximate)	2489 mm
Length (Approximate)	7556 mm
Weight (Approximate Net)	17,272 kg

### Working Range Capacity



DIM. (MM)	MAX.	MIN.
A 1 Std	3759	89
A 2 Ext	4572	89
A 3 Ext	7112	89
B 1 Std	3315	89
B 2 Ext	4218	89
B 3 Ext	6668	89
C	600	~
D	200	~
E	690	~
F	300	~

Actual machine W-H-L and Weight depend on ordered configuration. Technical data is subject to change without notice and may vary according to the workpiece geometry, the loading system and the workholding equipment supplied.

- A = Workspindle face to tailstock
- B = Axial Travel
- C = Workpiece Dia
- D = Hob Dia
- E = Workspindle Dia
- F = Workspindle Bore Dia.

# 600 HXL

## Horizontal Hobbing Machine

Standard Equipment	
Description	
Base machine with GE Fanuc 16i CNC control, 10.4" LCD Color Display	
Wired for 460 volts, 3 phase, 60 Hz	
Anti friction hardened and ground ways	
Way covers for Z axis and tail center	
CNC programmable hob swivel setting	
Automatic grease lubrications to all bearing surfaces	
Electrical panel to AMT and ANSI-NFPA 79 Codes	
Wet or dry cutting, with coolant tank/pump assembly	
B axis - hob servo motor	
C axis - work spindle integral liquid cooled torque motor	
X axis - radial feed servo motor	
Y axis - tangential/hob shift servo motor	
Z axis - axial feed servo motor	
A axis - hob swivel	
Automatic single and double cut cycles	
Speed and feed change between cuts	
Crown hobbing cycle	
Taper hobbing cycle	
Radial and tangential feed wormgear cycles	
Operator friendly data entry HMI screens	
Machine painted one standard color	
Selectable number of cuts	
Work light	
Programmable, multi-surface cutting capability	
<b>Standard Equipment Total (\$):</b>	

Optional Equipment	
Description	Price (\$)
HMI, PC Front End, Touchscreen	
Optional 1.5 DP head, 11"x14"	
Quick change hob arbor clamping	
Heavy duty hydraulic operated tailstock	
Adjustable loading cradle	
Hydraulic work clamping cylinder	
Emergency hob retract	
Hydraulic workpiece clamping device	
Extended (HE) bed to 4572 mm (180")	
Extended (HE) bed to 5080 mm (200")	
Extended (HE) bed to 7212 mm (280")	
Double magnetic chip conveyer	
Chiller unit for liquid cooling of integral C-axis motor	
Rotary deburring attachment	
Handwheel pendant for setup assistance	
Collet chuck assembly	
Set of levelling wedges	
Chiller unit for coolant system	
Traveling control panel, splash guard	
Special one sided crowning software	
Full enclosure	
Mist collector assembly	
Hob arbors in inch or metric design	
Special cycle executions	
<b>Optional Equipment Total (\$):</b>	

Total Cost:	
Standard Equipment Total (\$):	
Optional Equipment Total (\$):	
<b>TOTAL (\$):</b>	

Submit a  
**QUICK QUOTE** Request