



Cutting tools

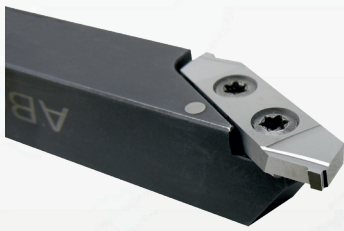
# Watchmaking



# CASE MIDDLE

## 4 Glass notch

Turning tool with profiled insert



## 3 Lug hole

REF. 343 - Drill - helix 34°



## 1 Milling

REF. 115/115-1 - Roughing end mill



REF. 1620 - EXPERT end mill stainless steel Z4

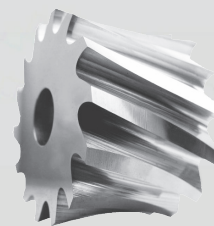


REF. 1515 - End mill 3 teeth  $l_1=1.5x d_1$



## 2 Lug

Circular milling cutter for lugs



## 5 Push button hole

**REF. 337** - NC-Center drills- Point angle 90°



**REF. 343** - Drill - helix 34°



**REF. 335** - Step drills

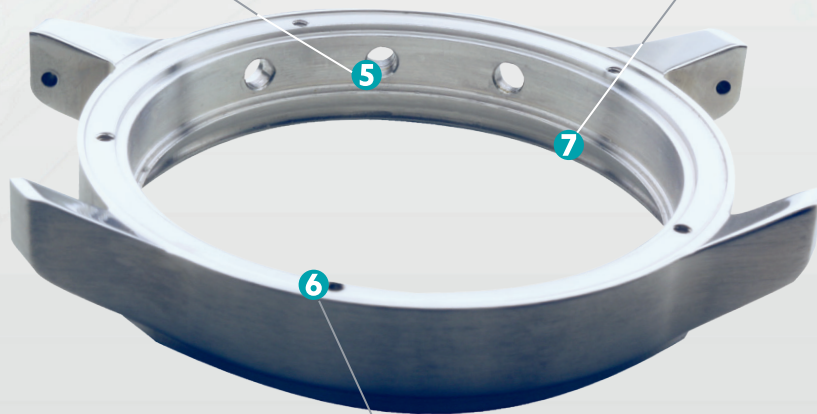
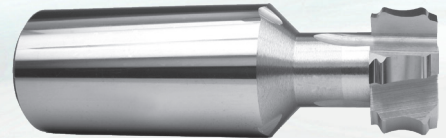


**REF. 338** - Twist drills with centering tip



## 7 Interior finish

Profiled T-slot end mill



## 6 Tapping

**REF. 5600** - Whirling tools as per NIHS 06-02 & 06-03 Z3

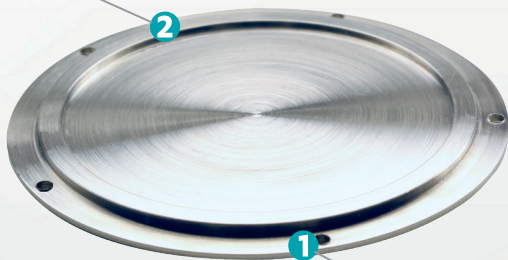
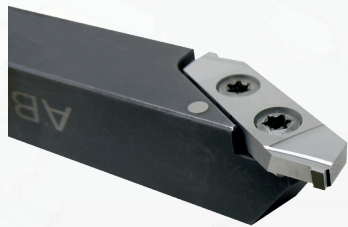




# BACK

## 2 Water resistant notch

Turning tool with profiled insert



1

## 1 Screw hole

REF. 335 - Step drills



## 3 Engraving

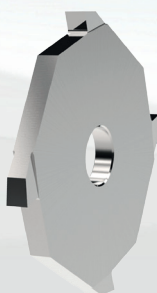
REF. 119-4 - Engraving mill - reinforced- V-shape



# PULL-OUT PIECE

## 2 Square

Polygon operation's mill



2

3



## 1 Notch

Z<sup>2</sup> - Tooth by tooth gear cutter



ORIGIN - Hobs for epicyclic & involute teeth



## 3 Threading

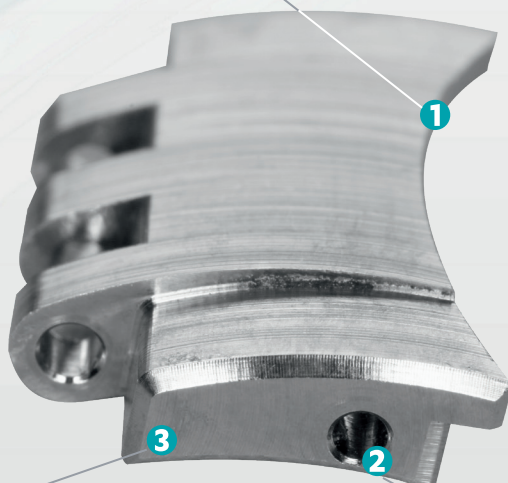
REF. 5000 - Thread whirling cutter



# WRISTLET

## 1 Link

Circular milling cutters with special profile



## 3 Link sawing

REF. 223-1 - Slitting saws DIN 1837 fine pitch



## 2 Link hole

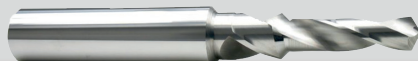
REF. 337 - NC-Center drill - Point angle 90°



REF. 370 - EXPERT drill stainless steel



REF. 335 - Step drill



# BOTTOM PLATE

## 4 Surface finish

REF. 111-1 - Straight cut end mill Z1 reinforced



REF. 1820 - EXPERT end mill for brass



## 2 Recess

## 3 Stud / Dot

Special profile « digging tools »



## 8 Drilling

REF. 353 - Twist drill – Z3



REF. 363 - Gundrills



## 9 Exterior

Blanking tool



## 7 Roughing

REF. 4015 - PCD end mills

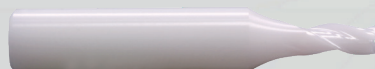


## 5 Poches

REF. 111-1 - Straight cut end mill Z1 reinforced



REF. 1820C01 - EXPERT Ceramic end mill for brass



## 1 Pull out piece hole

REF. 337 - NC-Center drill - Point angle 90°



REF. 340 - Twist drill helix 24°

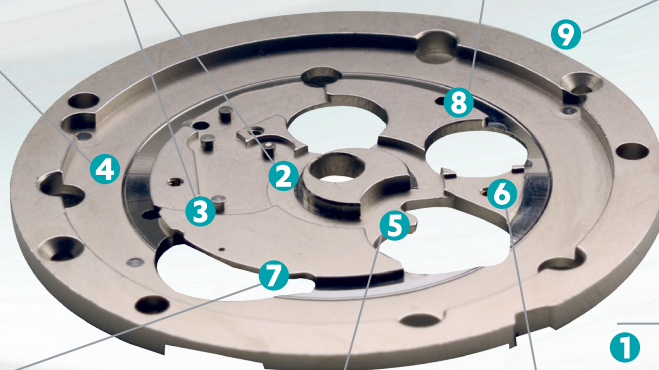


Flat drill



## 6 Tapping

REF. 5500 - Whirling tools as per  
NIHS 06-02 norm





# GEARS

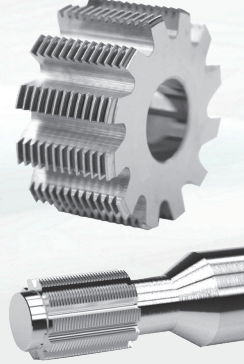


## Cylindric gear

**Z<sup>2</sup>** - Tooth by tooth gear cutter



**ORIGIN** - Hobs for epicyclic & involute teeth



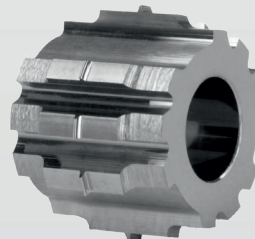
## Frontal gear

**E<sub>2</sub>F** - Hobs for frontal gear cutting



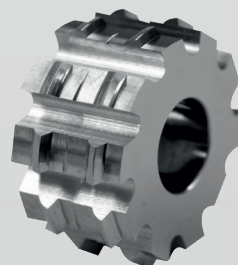
## Conical gear

**TRINITY** - Hobs for conical gears



## Escapement gear

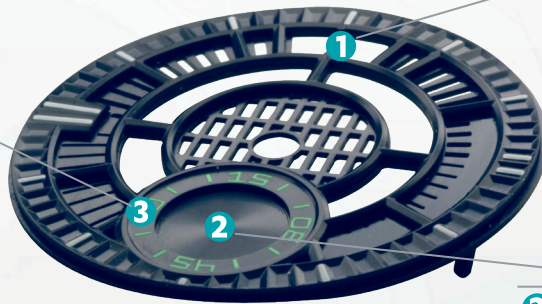
**REVOLUTION** - Hobs for asymmetrical gears



# DECORATION

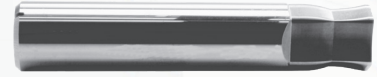
## 3 Engraving

REF. 119 - Engraving mill V-shape - flat tip



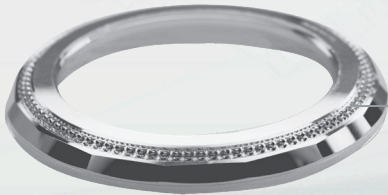
## 1 Date hole

Special punch tool



## 2 Snailing

Snailing tool

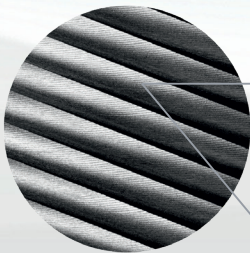


## Setting

REF. 343 - Drill - helix 34°

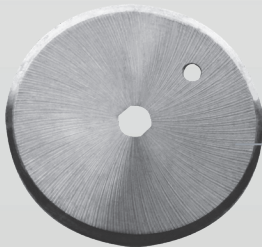


REF. 119-4 - Engraving mill - reinforced - V-shape



## Côtes de Genève

REF. 117 - T-slot cutters, 2 cuts, straight toothing



## Snailing

MILLS FOR SNAILING - in solid carbide or PCD



Sold and  
Serviced in NA

Star Cutter Company  
23461 Industrial Park Drive  
Farmington Hills, MI 48335

Tel (248) 474-8200  
Fax (248) 474-9518  
[www.Star-SU.com](http://www.Star-SU.com)